

A traditional Chinese garden scene featuring a pavilion with a multi-tiered, curved roof, a pond with a stone bridge, and a walkway with a railing. The garden is surrounded by lush green trees and rocks.

CIW China Studies Fellowship

Xi'an Jiaotong Liverpool University, Suzhou

Fellowship Purpose

1

Opportunity for Australian graduates to deepen their understanding of China and strengthen their Chinese language skills

2

Fills a gap in current offerings, which are mostly available as award courses (part of degrees – e.g. NCP short courses, semester abroad)

3

An immersive, in-country experience that will enable graduates to position themselves for China-focused careers and further graduate studies

Program structure

Two semesters of full-time study (starting in mid-February 2025 and running through mid-January 2026)

Summer program (mid-June to early September)

Semester study program



Two units of Chinese language (participants will test into 12 different levels) per semester

Advanced speakers can choose business Chinese and translation electives



Two units of China Studies electives per semester from among 30 offerings



Courses offered at undergraduate and graduate level



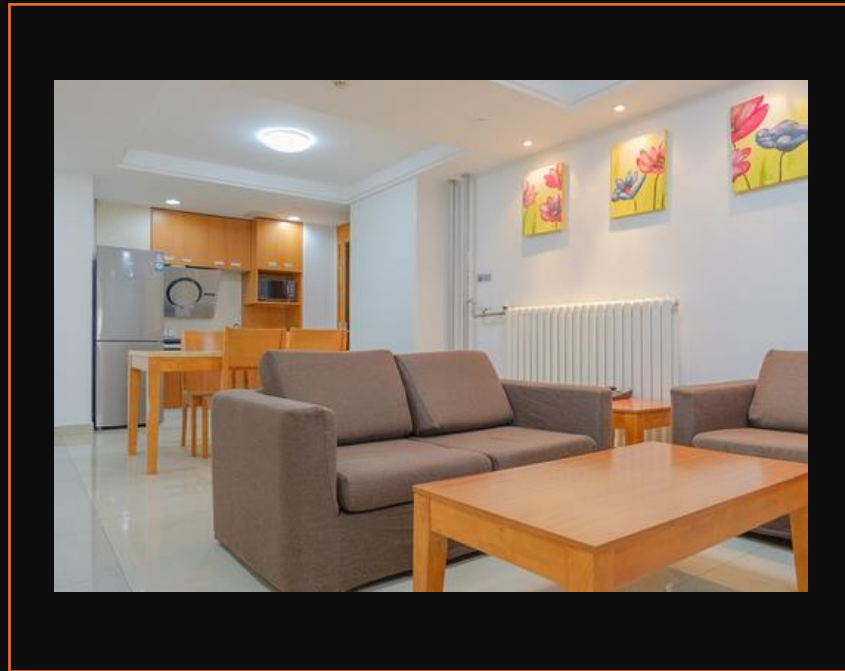
**More info can be found here:
<https://www.xjtlu.edu.cn/en/study/departments/school-of-humanities-and-social-sciences/china-studies>**

Summer program options

- Internship in Chinese enterprise
- SURF – Summer University Research Fellowship with School of Humanities or School of Business (supervised research projects)
- Summer school courses (including Chinese language options)
- Teaching assistant in Chinese language summer school
- Independent research project supervised by China Studies Faculty

Living arrangements

- Accommodation is provided
- XJTLU will arrange a room for you (some rooms are within multiple bedroom apartments with shared living room and kitchen – some are more traditional dorm rooms along a corridor)
- All rooms have ensuite and access to shared cooking facilities
- Student cafeteria food is good and cheap
- Cafes, gym and sports clubs on campus



Location

- Suzhou – an ancient canal city European visitors dubbed the “Venice of the East”
- One hour by train from Shanghai
- Known for its classical gardens
- And for technology and innovation
- XJTLU located in Suzhou Industrial Park – the most modern part of the city
- Connected by subway to the rest of the city



Key Dates

22 November 2024 -

Application deadline

2 December 2024 -

Offers made

6 December -

Offer acceptance deadline

December -

Enrol XJTLU

January -

Apply for visa

17 February 2025 -

Studies commence
